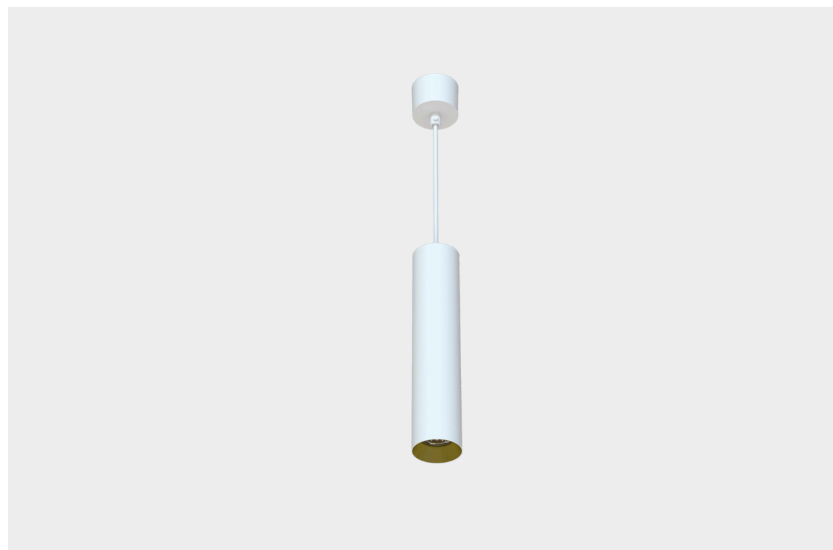




# S 1006 RAA



## RAA

Stylish designs for stylish applications: Raa is designed as a compact spotlight that provides elegance without compromising its appearance. The powder-coated aluminum cylindrical body has an anti-shine baffle in front of it for visual comfort. Spot, medium and flood angle options are available, available in 1170lm (CRI90) or 1320lm (CRI80) options. Standard colors are black or gold baffle, white or black body.

## Reflector

Polycarbon reflector designed for high efficiency in LED modules.

## Led

According to L70B50  $\geq 50,000$  hours, COB led with high efficacy factor and color rendering.

## Driver

High efficiency  $pf > 0.9$  with constant current output system.

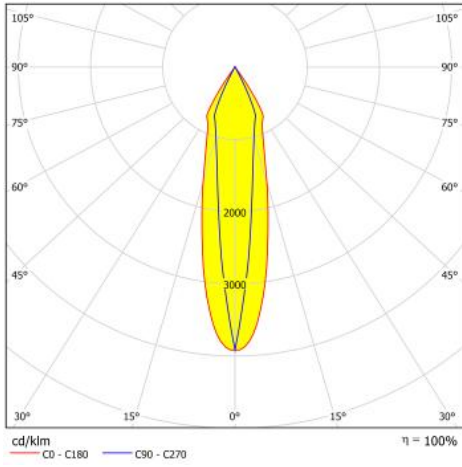
## Option

\* Dimming via DALI.

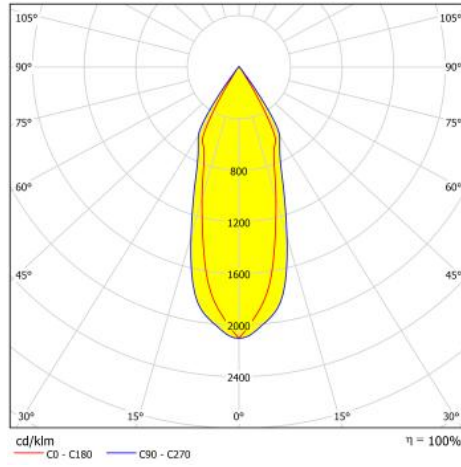


Double

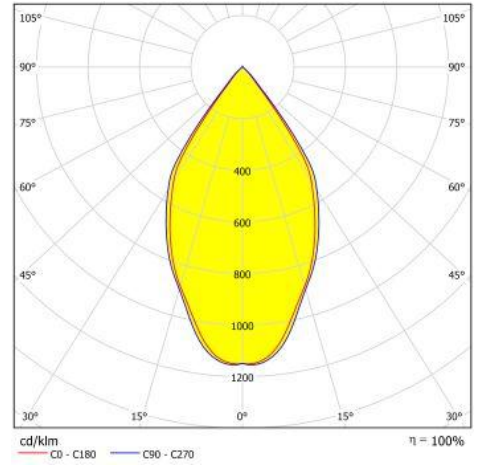
Type Code	Power (w)	CCT (K)	Light Output (lm)	CRI	V/Hz	Weight (Kg)	Beam Angle
SRAA.14.S.80.27	14	2700	840	>80	220 - 240 / 50 - 60	0,95	Spot (15°)
SRAA.14.S.80.30	14	3000	1160	>80	220 - 240 / 50 - 60	0,95	Spot (15°)
SRAA.14.M.80.27	14	2700	830	>80	220 - 240 / 50 - 60	0,95	Medium (35°)
SRAA.14.M.80.30	14	3000	1300	>80	220 - 240 / 50 - 60	0,95	Medium (35°)
SRAA.14.F.80.27	14	2700	830	>80	220 - 240 / 50 - 60	0,95	Flood (50°)
SRAA.14.F.80.30	14	3000	1360	>80	220 - 240 / 50 - 60	0,95	Flood (50°)
SRAA.14.S.90.27	14	2700	880	>90	220 - 240 / 50 - 60	0,95	Spot (15°)
SRAA.14.S.90.31	14	3100	1100	>90	220 - 240 / 50 - 60	0,95	Spot (15°)
SRAA.14.M.90.27	14	2700	890	>90	220 - 240 / 50 - 60	0,95	Medium (35°)
SRAA.14.M.90.31	14	3100	1080	>90	220 - 240 / 50 - 60	0,95	Medium (35°)
SRAA.14.F.90.27	14	2700	900	>90	220 - 240 / 50 - 60	0,95	Flood (50°)
SRAA.14.F.90.31	14	3100	1030	>90	220 - 240 / 50 - 60	0,95	Flood (50°)



SRAA 14.S.80.30



SRAA 14.M.80.30



SRAA 14.F.80.30

