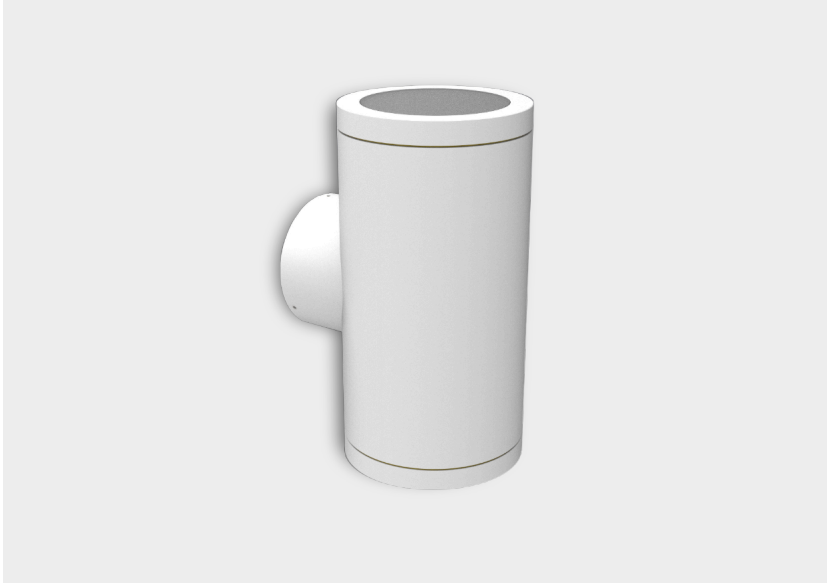




B 0315 HDC



Housing

Ø150mm galvanized, anti-corrosion electrostatic powder painted steel body.

Led

High efficacy PAR30 LED lamp with integrated driver and heatsink. Connected directly to the mains. Achieves 40,000 hours of lifetime and CRI > 80.

Optics

Opal tempered glass.

Lamp Base

Porcelain E-27

Çalışma Sıcaklığı Aralığı
-20 °C/+40 °C



Tip Kodu	Güç (w)	CCT (K)	Işık Akısı (lm)	CRI	V/Hz	Ağırlık (Kg)
BHDC.315.13.27	25	2700	1300	>80	220 - 240 / 50 - 60	2

